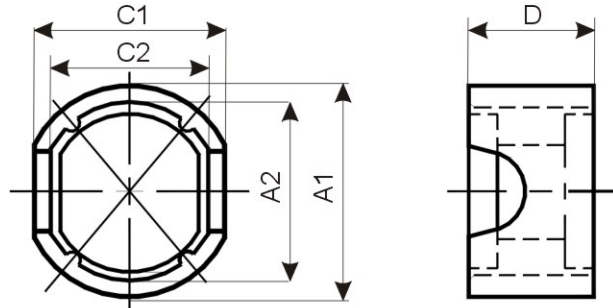
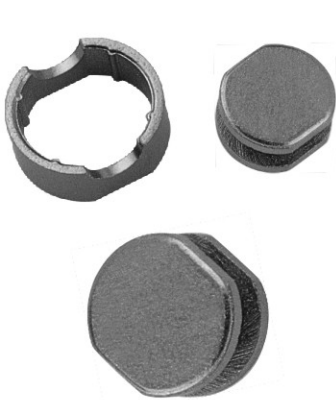


[CDRI TYPE] 面實裝 POWER CHOKE CORES 基座型

Base Type



FEATURES 特長

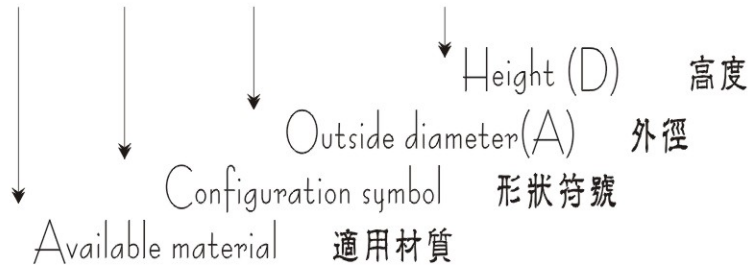
提供耐大電流，低阻抗值，防止外部輻射干擾之閉磁型表面粘著之磁芯。

Surface mount power choke cores offer low DC resistance, magnetically shielded structure prevents interference from peripheral components.

PRODUCT IDENTIFICATION

產品識別碼

DL5 CDRI 7.8 × 4.5



USEAGE 用途

各種OA裝置
行動電話
數位裝置

Various kinds of OA equipment;
Cellular telephone;
Digital equipment.

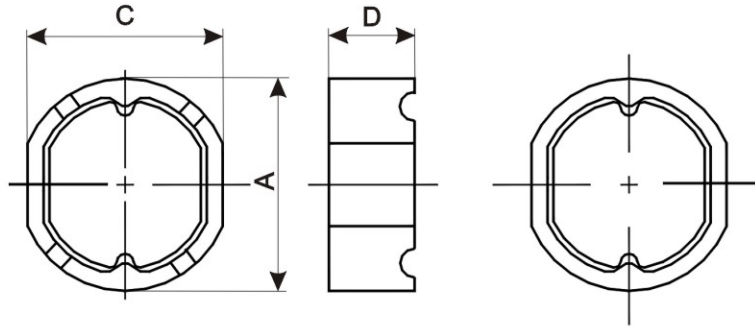
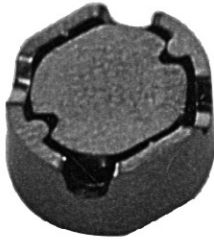
DIMENSION 尺寸

Core Order Code	CORE DIMENSION						UNIT:m/m	
	A1	A2	C1	C2	D	CDR	CRI	
CDRI 7.8×4.5	7.8±0.15	6.2±0.15	7.0±0.15	5.5±0.15	4.6± ₀ ^{0.2}	5.8×4.0	7.8×6.2×4.6	
CDRI 10×4.5	10 ±0.15	8.4±0.15	9.0±0.15	7.5±0.15	4.6± ₀ ^{0.2}	7.8×4.0	10×9.0×4.6	
CDRI 12.6×4.5	12.6±0.15	10.7±0.15	11.6±0.15	9.7±0.15	4.6± ₀ ^{0.2}	10×4.0	12.6×11.6×4.6	

[CDRI TYPE]

面實裝 POWER CHOKE CORES 基座型

Base Type



FEATURES 特長

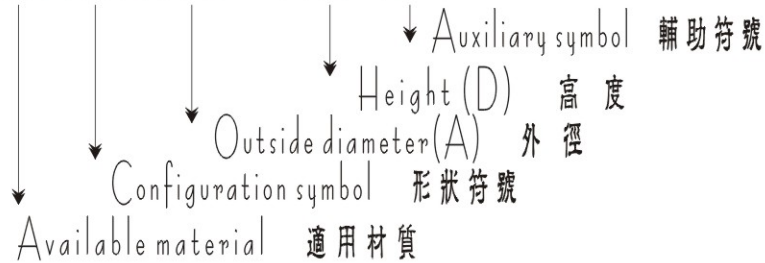
提供耐大電流，低阻抗值，防止外部輻射干擾之閉磁型表面粘著之磁芯。

Surface mount power choke cores offer low DC resistance, magnetically shielded structure prevents interference from peripheral components.

PRODUCT IDENTIFICATION

產品識別碼

DL5 CDRI 9.6 × 4.3 R



DIMENSION 尺寸

UNIT:m/m
CORE DIMENSION

Core Order Code	A	C	D	CDR	CRI
CDRI 9.6X4.3 R	9.60±0.15	9.10±0.15	4.3±0.15	7.4X4.4 R	9.6X9.10X4.3

USEAGE 用途

各種OA裝置
行動電話
數位裝置

Various kinds of OA equipment;
Cellular telephone;
Digital equipment.